



# THE HIGHLANDS CAT CLUB

Presents it's

14<sup>th</sup> Annual All Breeds & Companion Exhibits Cat Show  
3 Rings Closed Style Judging

Featuring

**TOP 10 OVERALL KITTENS & CATS**

Open Style Judging

and

**GOLDEN YEARS SPECIALTY RING**

Open Style Judging

Saturday 9<sup>th</sup> October 2010

Hill Top Recreation Centre

Cnr. Rosina & Cumbertine Street, Hill Top, NSW.

This show is proudly  
sponsored by



Entries Close Tuesday 21st September 2010 with

The Show Secretary

Sharon Curtis

PO Box 56 , Hill Top, NSW, 2575

02 4889 8537

**VETTING 7am TO 8.15am**

**FLOOR TO BE CLEARED AT 8.30am**

**JUDGING COMMENCES 8.45am**

THE HIGHLANDS CAT CLUB IS AFFILIATED WITH THE NSW CAT FANCIERS ASSOCIATION INC.

THE CLUB RESERVES THE RIGHT TO ALTER ANY ASSIGNMENTS, WITHOUT NOTICE SHOULD THE NEED ARISE.

This Show will be conducted under the Rules & Show Procedures of the NSWCFCA Inc.

Copies of the Rules & Show Procedures may be obtained from the office by writing to NSWCFCA Inc. Po Box 379 St Marys 1790  
or downloaded from the web site; [www.nswcfa.asn.au](http://www.nswcfa.asn.au)

# Introducing our Judges

## Ring 1

## Ring 2

## Ring 3

<b>Group 1</b> <b>Kittens</b> Fiona Cooper (NSWCFA) <b>Desexed</b> Fiona Cooper <b>Entire</b> Allan Davies (CFCCQ)	Joanne Millar (NZCF) Tony Hurry (NSWCFA) Tony Hurry	Margaret Sim (NSWCFA) Val Hurry (NSWCFA) Margaret Sim
<b>Group 2</b> <b>Kittens</b> Fiona Cooper (NSWCFA) <b>Desexed</b> Fiona Cooper <b>Entire</b> Allan Davies (CFCCQ)	Joanne Millar (NZCF) Maureen Norberry (NSWCFA) Maureen Norberry	Margaret Sim (NSWCFA) Margaret Harris (NZCF) Margaret Harris
<b>Group 3</b> <b>Kittens</b> Fiona Cooper (NSWCFA) <b>Desexed</b> Fiona Cooper <b>Entire</b> Allan Davies (CFCCQ)	Joanne Millar (NZCF) Maureen Norberry (NSWCFA) Maureen Norberry	Margaret Sim (NSWCFA) Margaret Harris (NZCF) Margaret Harris
<b>Companions</b> <b>All Exhibits</b> Sharyn Yelland	Tony Hurry	Margaret Sim
<b>Golden Years – Valerie Hurry (NSWCFA)</b> All Exhibits will be judged Open Style upon the completion of the Open Class judging prior to the presentation of Top 10 Kittens & Cats. Only Exhibits over the age of 7 years are eligible to enter. Entire & Desexed Exhibits will be judged together. <b>Exhibits may enter in the Golden Years Ring only.</b> Dispensation has been granted by the NSWCFA Inc for exemption from the Open Class judging for any pedigree exhibit entered in the Golden Years ring.		
<b>Top 10 Kittens in Show - Allan Davies (CFCCQ)</b> <b>Top 10 Cats in Show - Joanne Millar (NZCF)</b> The Top 10 Overall Kittens & Cats will be selected from the 1 <sup>st</sup> placed Top 5 of each Group and of each Ring.		
<b>Supreme Companion – Margaret Harris (NZCF)</b>		
Miscellaneous Classes will be allocated on the day of the show		

## Classes for Competition

<b>Pedigree</b> <b>Kitten Classes</b> 1. Litters U/4 months 2. Female Kitten U/9 months 3. Male Kitten U/9 months 4. Spay Kitten U/9 months 5. Neuter Kitten U/9 months  <b>Miscellaneous</b> (additional cost to entry) 6. Bred By Exhibitor 7. Eye Colour & Shape 8. Coat Colour & Condition	<b>Entire Cats</b> 10. Female Cat 11. Male Cat Each Eligible Cat will be entered automatically in the relevant CCCA class at no addition cost.  12. Golden Years  <b>Miscellaneous</b> (additional cost to entry) 13. Bred By Exhibitor 14. Eye Colour & Shape 15. Coat Colour & Condition	<b>Desexed Cat</b> 17. Spay Cat 18. Neuter Cat Each Eligible Cat will be entered automatically in the relevant CCCA class at no addition cost.  19. Golden Years  <b>Miscellaneous</b> (additional cost to entry) 20. Bred By Exhibitor 21. Eye Colour & Shape 22. Coat Colour & Condition
<b>Companions</b> <b>Kittens</b> 24. Female / Spay 25. Male / Neuter  <b>Miscellaneous</b> (additional cost to entry) 26. Best Purrsonality 27. Best Groomed 28. Most Appealing Face	<b>Cats</b> 29. Spay 30. Neuter  <b>Miscellaneous</b> (additional cost to entry) 31. Best Purrsonality 32. Best Groomed 33. Most Appealing Face	

# Show Personnel

Veterinary Officer	J. Slowiaczek -Tahmoor Veterinary Clinic C. Dowey – St Clair Veterinary Surgery
Show Manager	Bradley Curtis Contact Phone Numbers: (Home) 02 4889-8537 (Mobile) 0428 944 455
Ass. Show Manager	Bradley Stokes
Show Secretary	Sharon Curtis
NSWCFA Representative	Stephanie Tscherne
Chief Steward	Stephanie Tscherne
Vet Stewards	Chris Buckley, Anne McNaughton
Stewards	Stephanie Tscherne, Di Stokes, Chris Buckley, Anne McNaughton, Reece Noldart, Sharyn Yelland, Robyn Campbell, Shara Walsh.
Trophies	Irene Chandler, Laura Evans.
Cardroom	Group 1 – Denise White, Carol Cootes. Group 2 - Lesley Roberts. Group 3 – Christine Smith, Jerome Prince –Foster, James Duker.  Recorder – Lorraine Vahland
Floor Attendants	Bruce Chandler, Brad Stokes

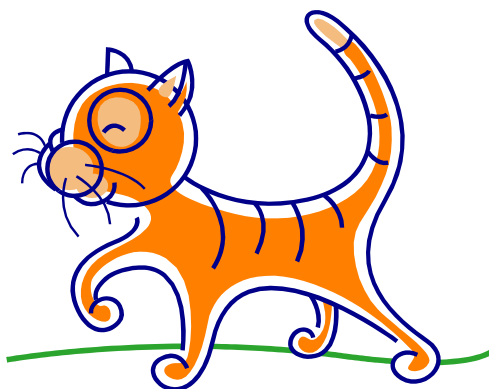
## Please note

### Kitchen – Meals

The kitchen will be open in the morning to serve tea or coffee & toast prior to the commencement of the judging.

### Car Parking

**Due to the limited space available for parking exhibitors are requested to park in the street or on the nature reserve area at the rear of the hall next to the play ground. Unfortunately on site parking is limited and will be reserved for Judges, Stewards and Workers**



# Conditions of Entry

## **MEMBERSHIP STATUS**

All exhibitors resident in NSW must be current financial members of NSWCFCA. New exhibitors resident in NSW may show three times as non-members provided their exhibits are registered in their name. An exhibitor resident in another state must be a member of a controlling body recognised by CCCA or ACF and the exhibits must be registered in the exhibitors name with that controlling body.

## **ENTRIES**

All entries must be submitted on the official NSWCFCA Entry Form together with a clear copy of each exhibits registration certificate in the name of the exhibitor as owner. For interstate exhibitors where the registration certificate does not include a four generation pedigree, then a four generation pedigree must be provided showing the breeds and colours of all forebears. For Unregistered Companion exhibits entered attach; a copy of the exhibit's certificate of sterilisation (desexing) signed by a qualified Veterinary Surgeon. A completed NSWCFCA Unregistered Companion Exhibit Information Form.

## **RETURNED CHEQUES**

Should any cheque be returned unpaid, a bank cheque or money order will be required to ensure that the entry is processed, and the costs incurred by the club for the returned cheque shall be paid by the exhibitor.

## **AMENDMENTS TO SEX / COLOUR / TITLES**

Any change to the sex or colour / pattern of an exhibit after an entry has been lodged must be submitted in writing to the Show Secretary together with a copy of the amended Certificate of Registration.

## **CLAWS TO BE CLIPPED**

The front and back claws of each exhibit must be clipped.

## **VETERINARY INSPECTION**

Each exhibit must be inspected by and pass the Veterinary's Officer's inspection before being allowed to be benched in the show. Exhibitors are to handle their own cats at the vetting table.

## **VACCINATION OF KITTENS**

All kittens must be vaccinated. Exhibitors must produce documentary evidence (**valid vaccination certificate**) for each kitten and a vaccination shall have been carried out not less than 14 days prior to the date of the show. Failure to do so shall result in rejection of the exhibit concerned.

## **AGGRESSIVE EXHIBITS**

A Judge or Steward is not required to handle any exhibit showing signs of aggression. Owners have the duty of care not to bench any exhibit that has a reported history of fractious behaviour. The Show Manager and Show Committee in consultation with the Show Representative may require the removal of any such exhibit from the show.

## **NSWCFA CAT / KITTEN OF THE YEAR AWARDS**

To be eligible for Cat of the Year award a cat must be in the continuous ownership of a financial member throughout the year.

Points are awarded based on the Top Five results at a show

1<sup>st</sup> - 10pts; 2<sup>nd</sup> - 7pts; 3<sup>rd</sup> - 4pts; 4<sup>th</sup> - 2pts; 5<sup>th</sup> - 1pt.

Note 1.

Where an owner becomes a member after the start of a calendar year, points will only accumulate from the date the membership application is processed by the Office.

Note 2.

If during the year a cat is transferred to a new owner who is not a member, the cat's ownership by a financial member will be deemed continuous provided a membership application from the new owner is received and recorded by the Office within 4 weeks of the date of transfer, otherwise note 1 shall apply.

## **AWARDS & PRIZES**

All such cards, trophies placed on cages are the responsibility of the exhibitor and the Club regrets that it is not possible to replace any that may subsequently disappear from unattended cages. The Show Committee reserves the right to vary the prize list if necessary. Special Rosette's & Trophies for Overall Top 10 Kitten & Cats. Top 5's in each ring each group – Trophies. Miscellaneous Classes – Trophies.

## **CANCELLATIONS**

We ask for your co-operation in notifying the Show Manager or Show Secretary of cancellations by Thursday 7<sup>th</sup> October.  
(where possible)

**ALL EXHIBITS MUST REMAIN ON EXHIBITION IN SHOW CAGES UNTIL 4.00PM**

## The Highlands Cat Club Summary Sheet

Non Members Kitten/Cats – Pedigree & Companion Exhibits 3 Rings no miscellaneous classes (NON MEMBER of The Highlands Cat Club)	\$25.00 ea	
Highland Members Kitten/Cats – Pedigree & Companion Exhibits 3 Rings no miscellaneous classes (MEMBER of The Highlands Cat Club)	\$15.00 ea	
Litters 3 Rings no miscellaneous classes	\$15.00 ea	
Litter Kittens – 3 Rings no miscellaneous classes	\$15.00 ea	
Golden Years – 1 Ring Only	\$ 7.00 ea	
Miscellaneous Classes Pedigree & Companion Exhibits	\$ 5.00 ea	
Show Catalogue Must be ordered & Paid for with Entry	\$ 7.50 ea	
Double Cages (Litters Free) ONLY AVAILABLE FOR ADULTS & LARGE BREED KITTENS	\$ 5.00 ea	
Advertising in Show Catalogue	Business Card Half Page Full Page	\$ 3.00 ea \$ 6.00 ea \$10.00 ea
Donations		
Raffle Tickets	3 / \$2.00	
Benching Fee		<b>\$ 5.00</b>
<b>TOTAL</b>		<b>\$</b>

**Name**

**Address**

**P/Code**

**Phone (A/H)**

**(B/H)**

**Email**

I / We agree to abide by the rules and show procedures of the NSW Cat Fanciers Association Inc.

I / We have read and accept the condition of entry as outlined on the show schedule that accompanies this summary sheet.

**ALL EXHIBITS MUST REMAIN ON EXHIBITION IN SHOW CAGES UNTIL 4.00PM**

Print Name ..... Signature..... Date .....

Print Name ..... Signature..... Date .....

PLEASE MAKE CHEQUES / MONEY ORDERS PAYABLE TO "THE HIGHLANDS CAT CLUB"  
 SEND ENTRIES TO; THE SHOW SECRETARY  
 MRS SHARON CURTIS  
 PO BOX 56 HILL TOP NSW 2575.

**ENTRIES CLOSE TUESDAY 21ST SEPTEMBER 2010 (NO LATE ENTRIES WILL BE ACCEPTED)**

